

# NOTES AND NOTE NAMES



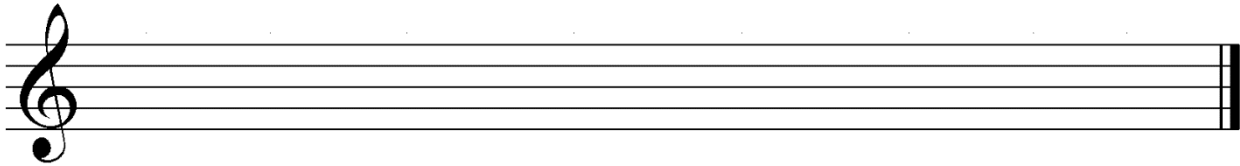
Name \_\_\_\_\_

Form \_\_\_\_\_

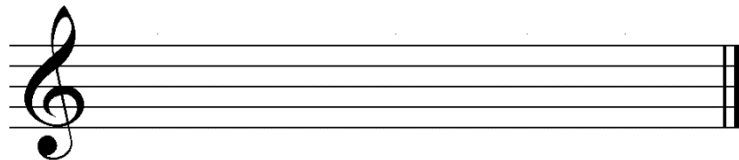
We have already discovered the word pitch. Pitch describes how \_\_\_\_\_ or \_\_\_\_\_ a sound is. When we talk about *specific* pitches in music, we use a musical alphabet, it goes like this... c,d,e,f,g,a,b,c.

**The staff:**

- 1) Draw a neat line of treble clefs on the staff.



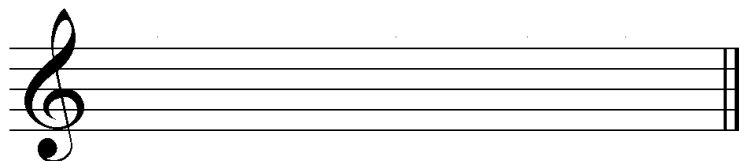
- 2) Write in the notes in the spaces and label them.



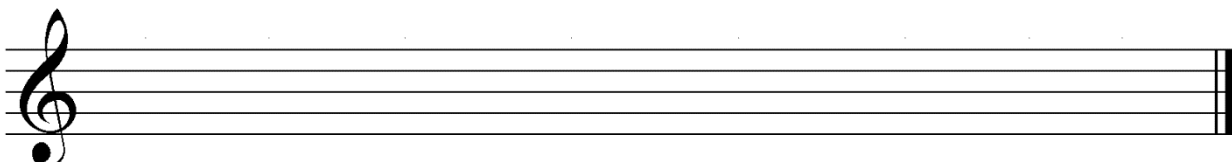
- 3) Make up your own rhyme to help you remember the notes on the lines.

E \_\_\_\_\_ G \_\_\_\_\_ B \_\_\_\_\_ D \_\_\_\_\_ F \_\_\_\_\_

- 4) Now write in the notes on the lines and label them.



- 5) Write the whole musical alphabet onto the staff, using the example in the information booklet as a guide to help you.



C D E F G A B C D E F G A

- 6) Design a poster which shows both the names of the notes in the spaces (FACE) and the names of the notes on the lines (using your own rhyme in question 3 above) clearly and could help a Primary School pupil in learning the correct notes in the treble clef.